



**cosma**

**VELA**

SET



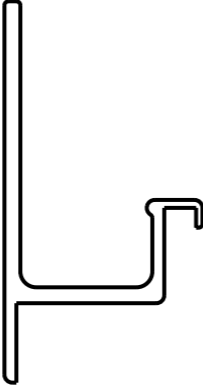
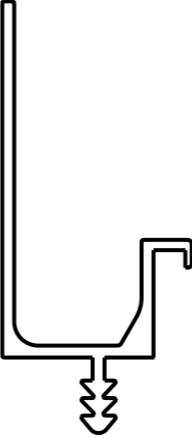
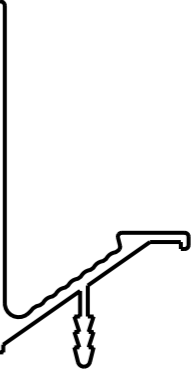




# VELA

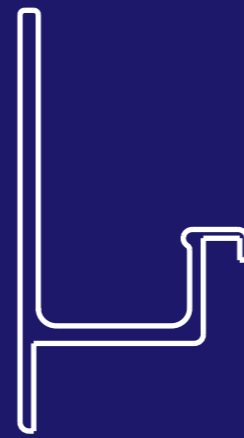


## PROFILE OVERVIEW

<b>PROFILE CODE</b>	 AP 367	 AP 218.N	 AP 235
<b>PROJECT STATUS</b>	DEFINED <b>891 SERIE</b>	IN DEFINITION <b>24-080 / 25-084</b>	IN DEFINITION <b>25-073</b>
<b>DOOR THICKNESS</b>	22	22	22
<b>ASSEMBLY</b>	SCREWED	HARPOON	HARPOON
<b>PAGE</b>	3	8	12

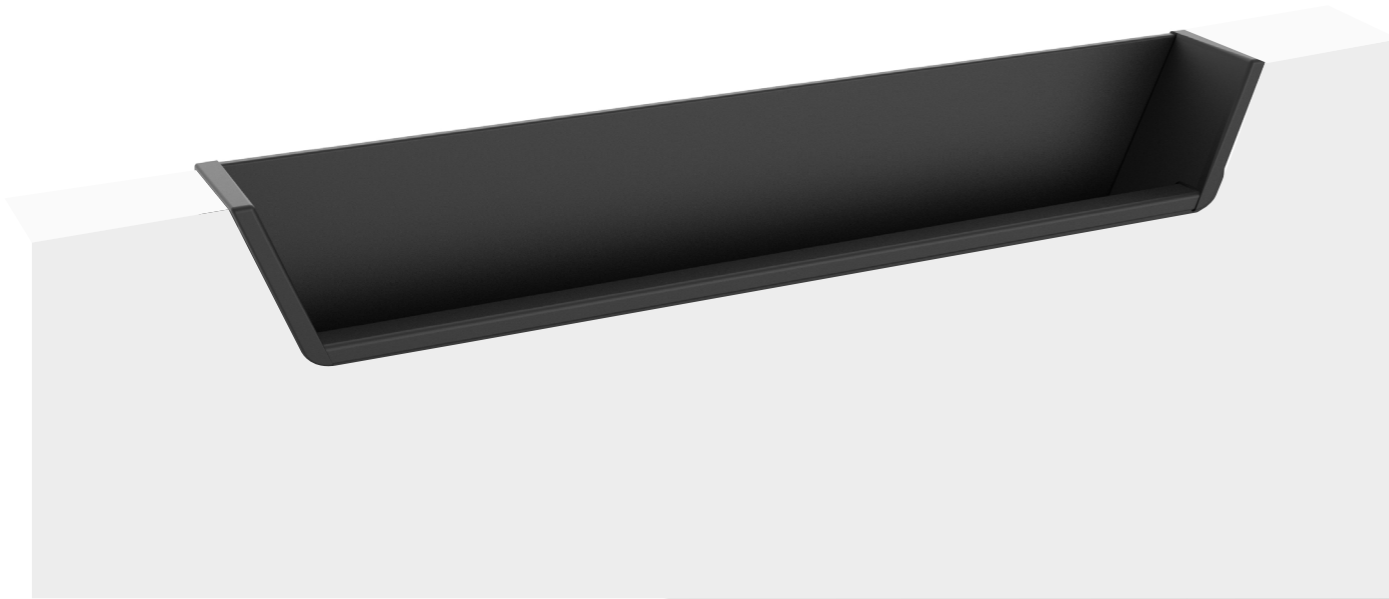
VELA

SCREWED  
VERSION  
891 SERIE

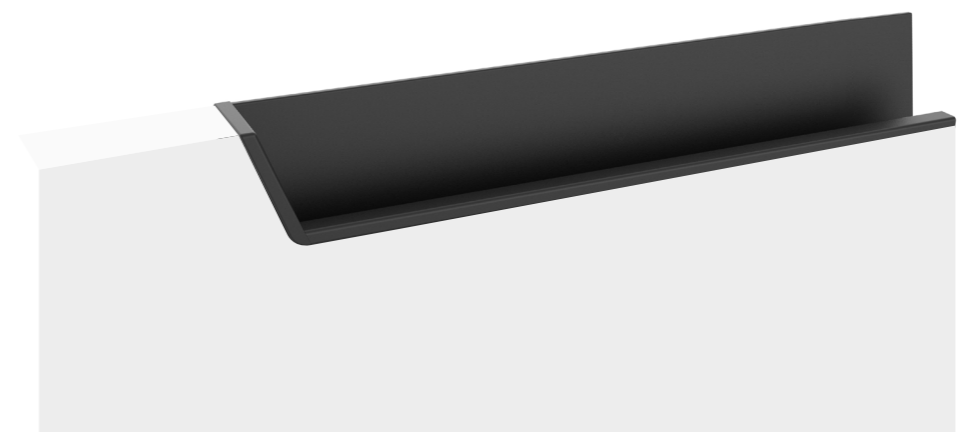
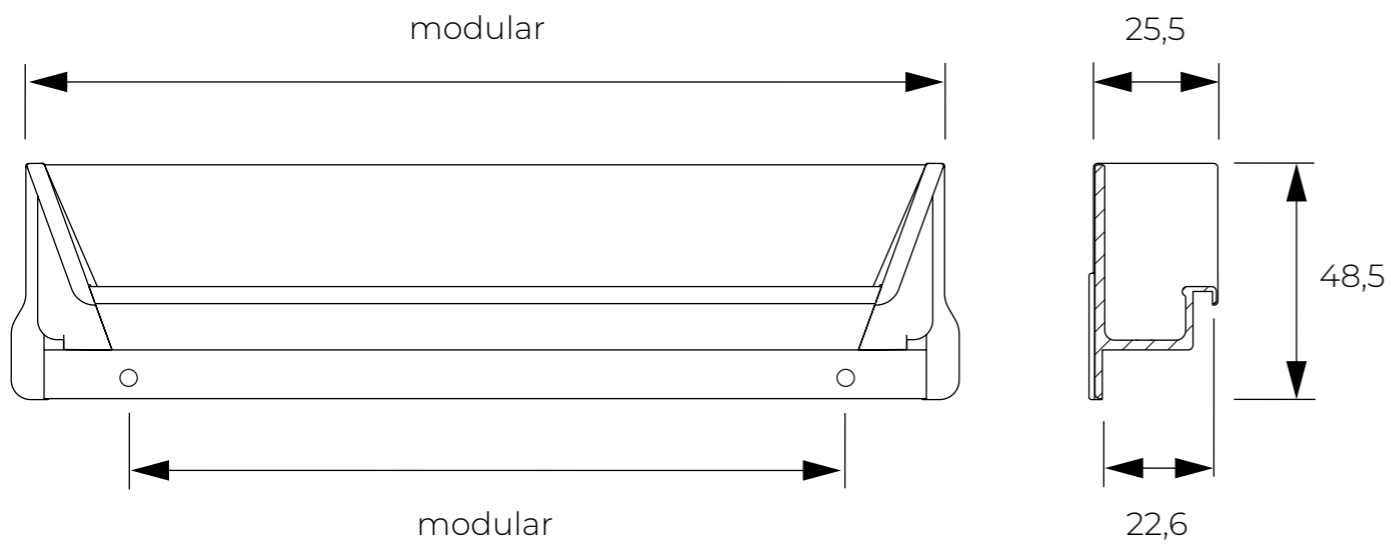




# VELA 000891



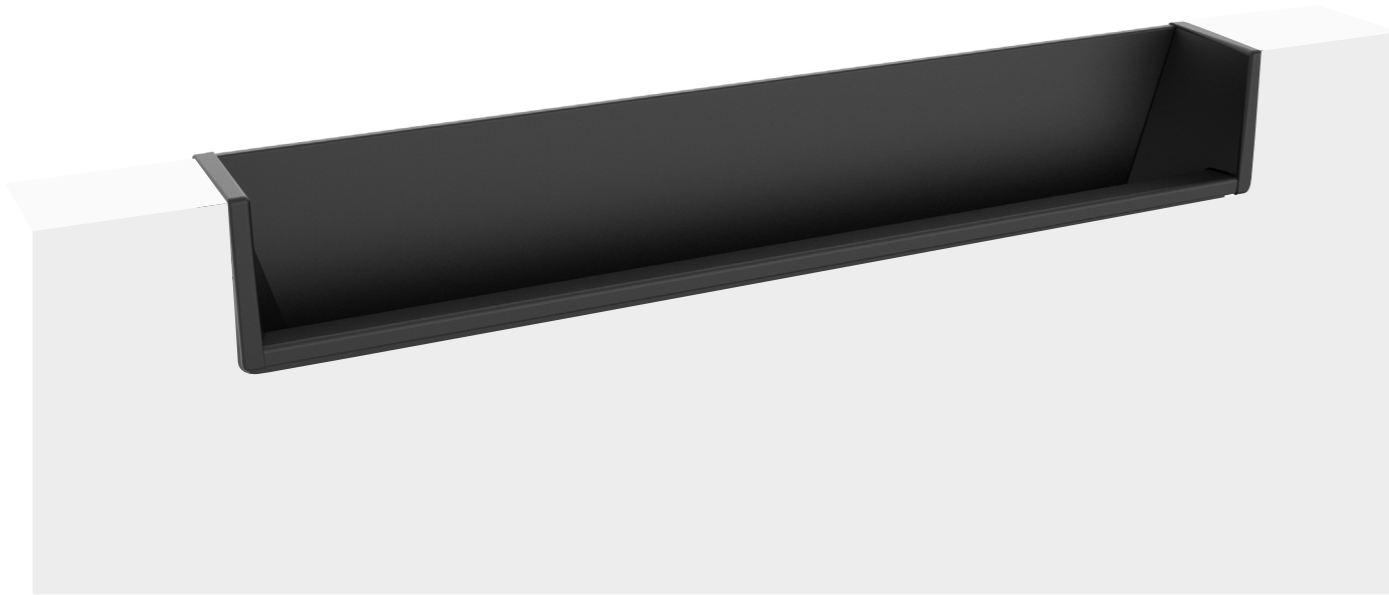
DOOR THICKNESS **22mm** / **SCREWED** ASSEMBLY / **ALUMINIUM** and **ZAMAK**



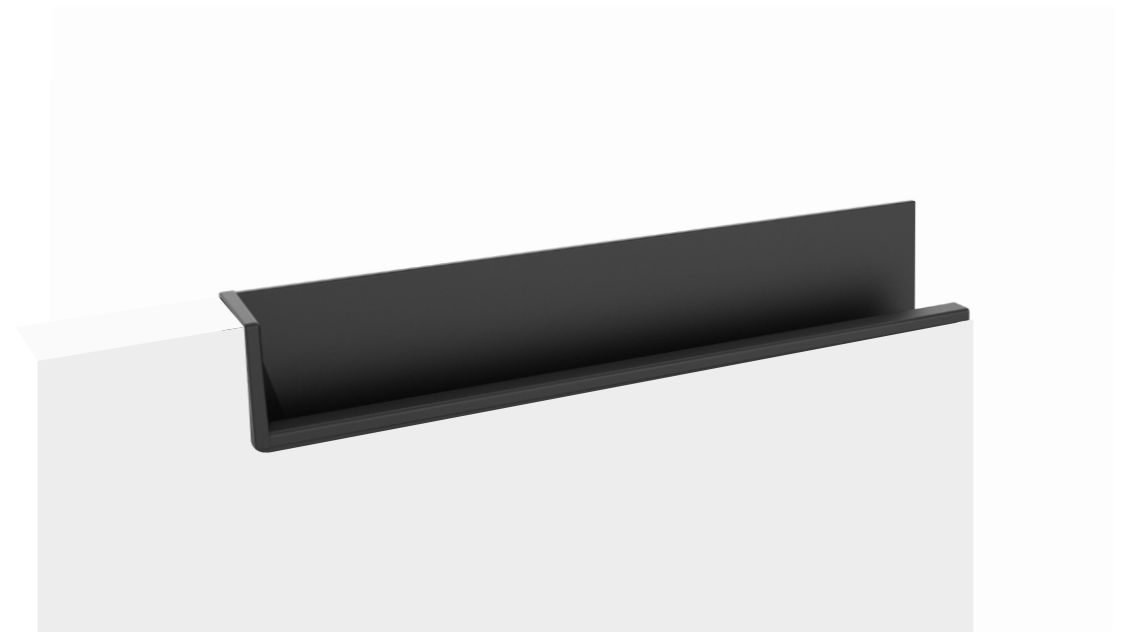
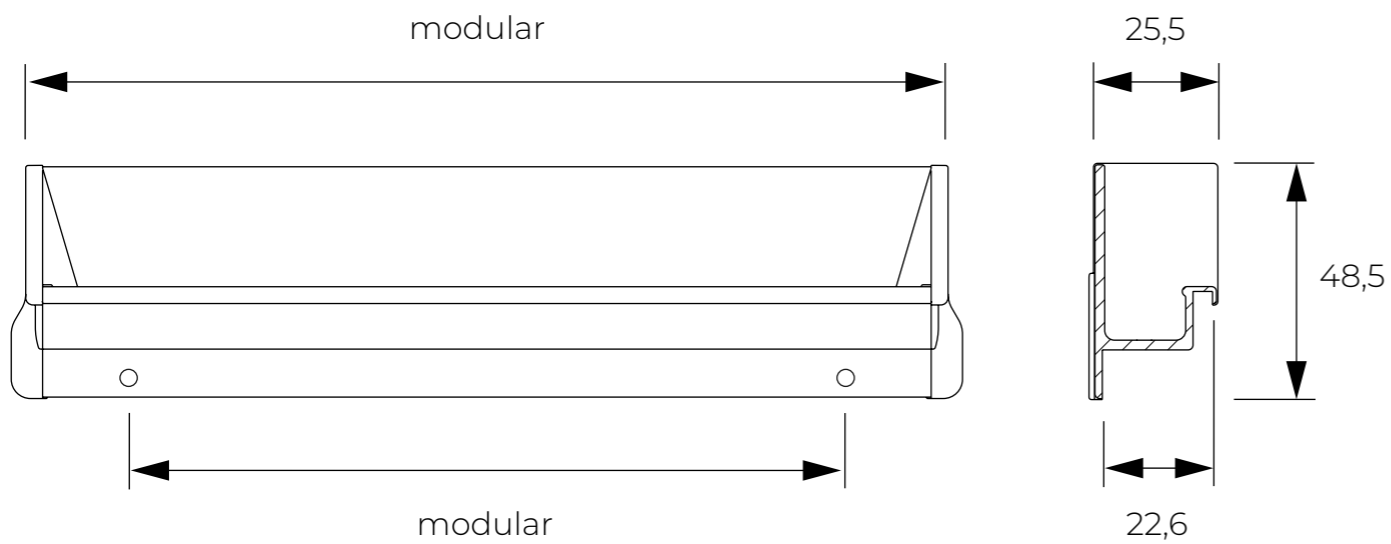
/ VERSION WITH **RIGHT OR LEFT** CAP



# VELA 000892



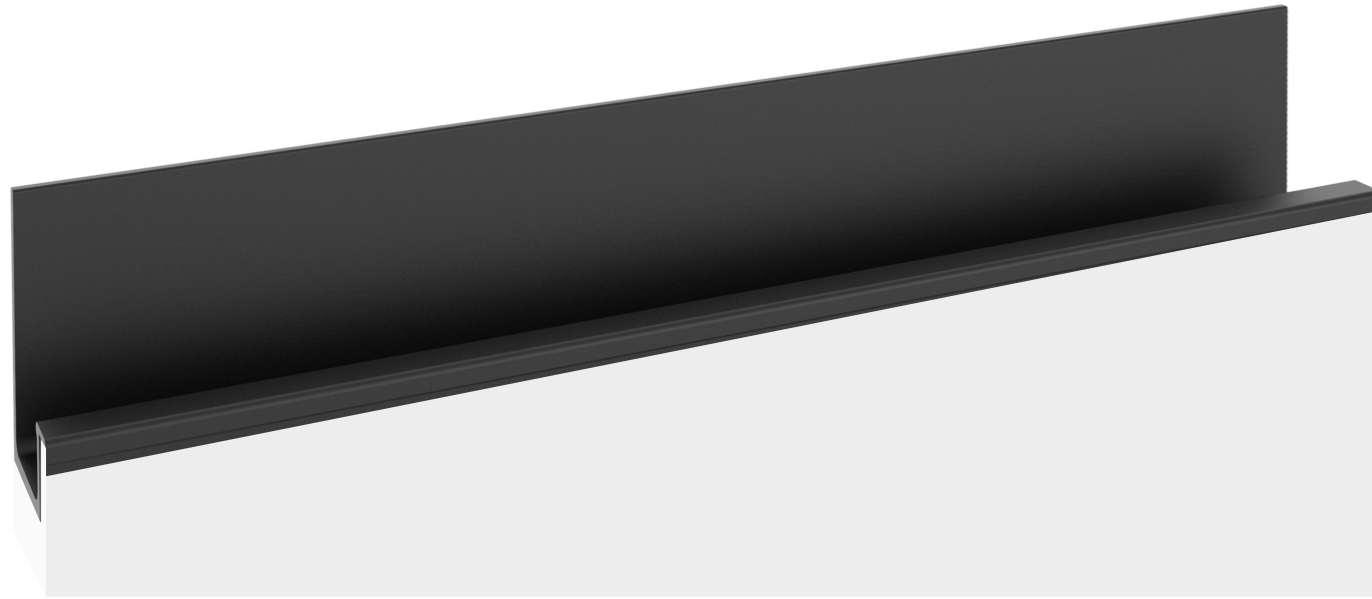
DOOR THICKNESS **22mm** / **SCREWED** ASSEMBLY / **ALUMINIUM** and **ZAMAK**



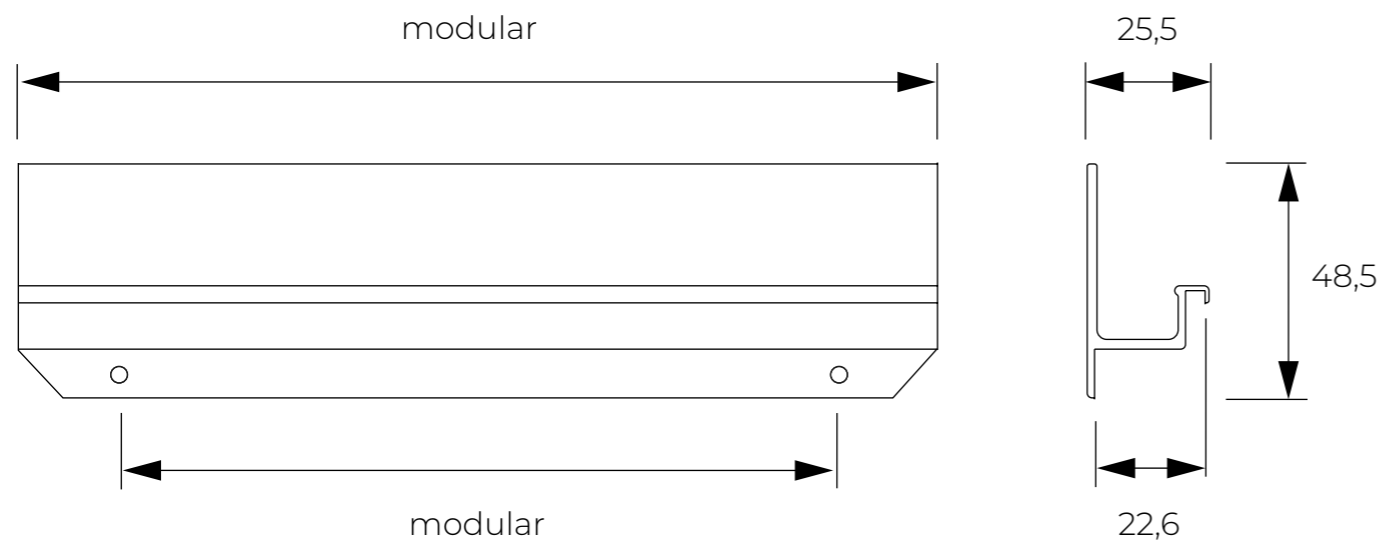
/ VERSION WITH **RIGHT OR LEFT** CAP



# VELA M000891



DOOR THICKNESS **22 mm** / **SCREWED** ASSEMBLY / **ALUMINIUM**



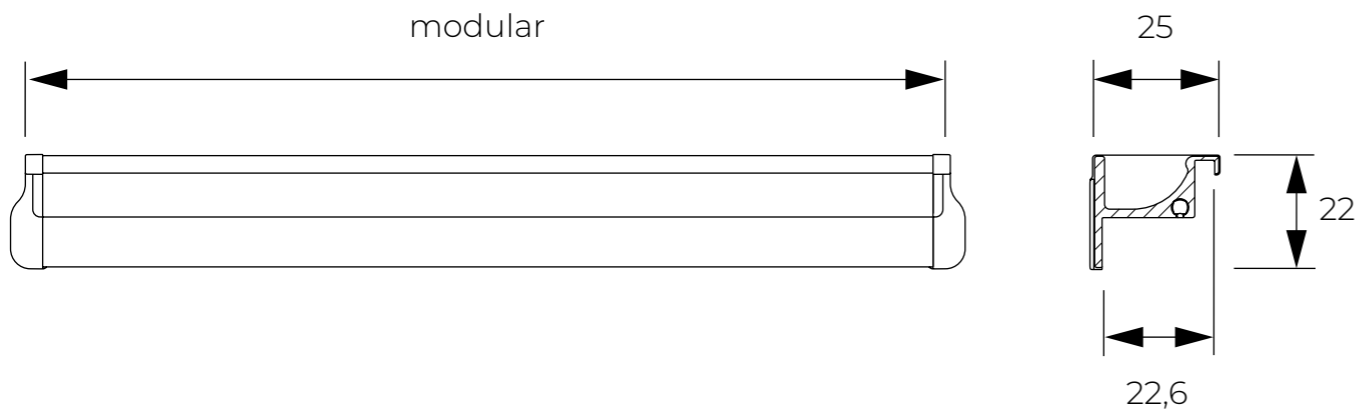


# VELA

ABBINAMNETO  
**000783**



DOOR THICKNESS **22mm** / **SCREWED OR GLUED** ASSEMBLY / **ALUMINIUM and ZAMAK**



VELA

HARPOON  
VERSION

24-080/25-084

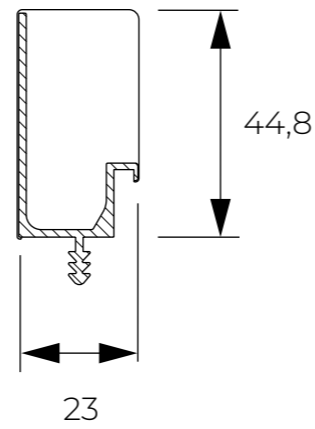
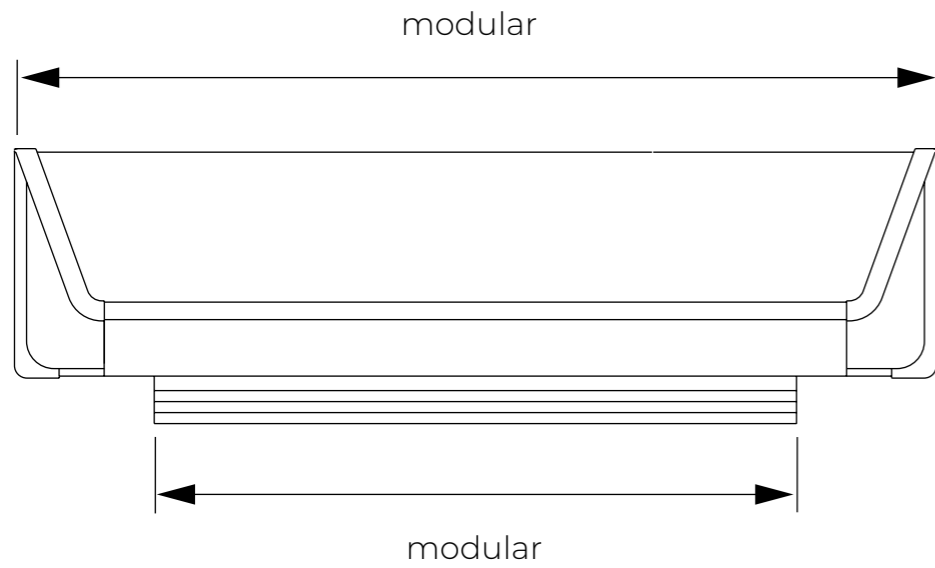




# VELA 24-080



DOOR THICKNESS **22mm** / **HARPOON** ASSEMBLY / **ALUMINUM** and **ZAMAK**



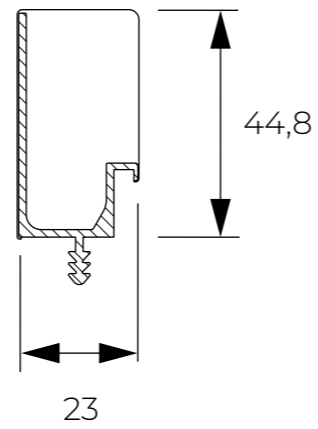
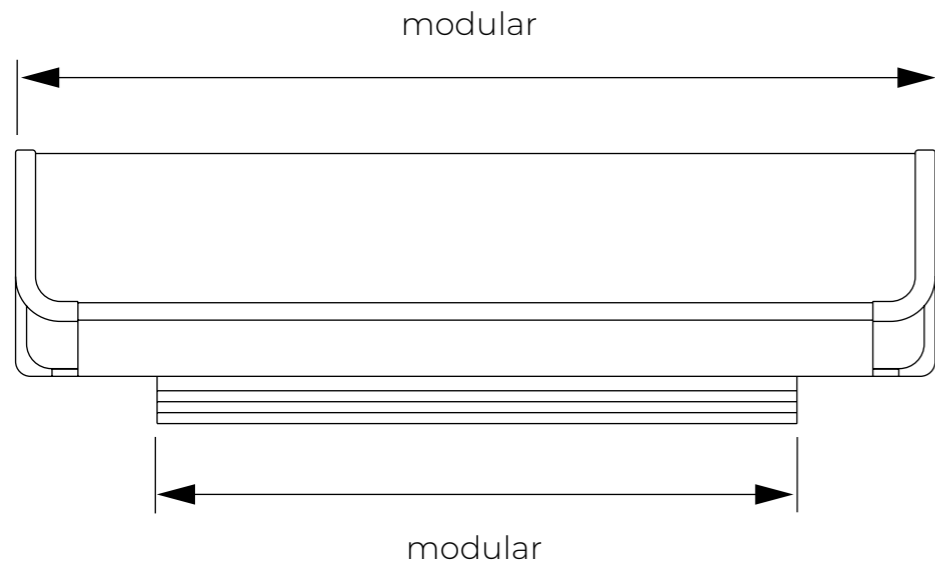
/ VERSION WITH **RIGHT OR LEFT** CAP



# VELA 25-084



DOOR THICKNESS **22mm** / **HARPOON** ASSEMBLY / **ALUMINUM** and **ZAMAK**



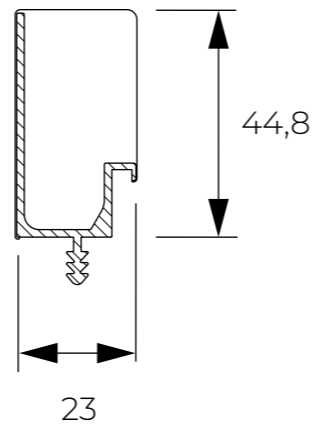
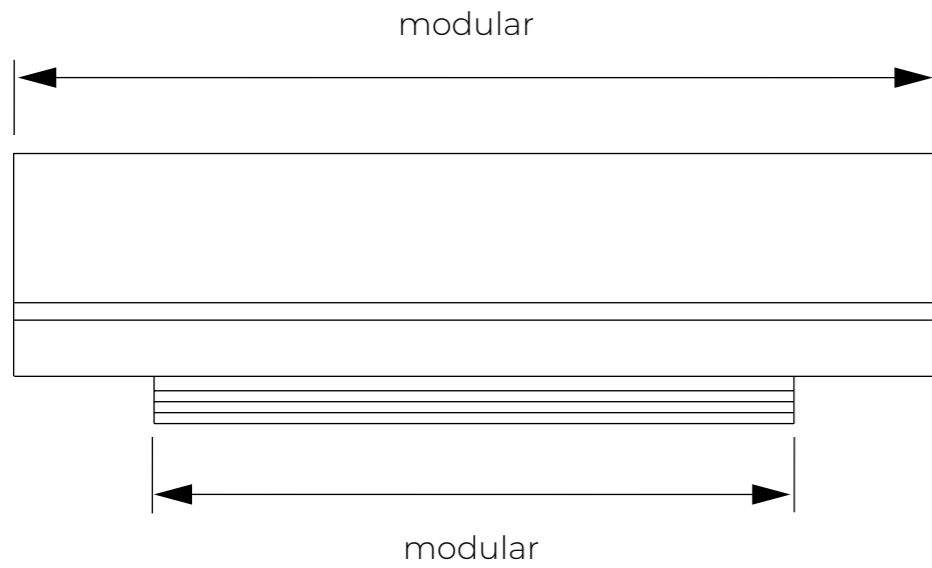
/ VERSION WITH **RIGHT OR LEFT** CAP



# VELA 000735



DOOR THICKNESS **22 mm** / **HARPOON** ASSEMBLY / **ALUMINUM**



VELA

HARPOON  
VERSION  
25 - 073

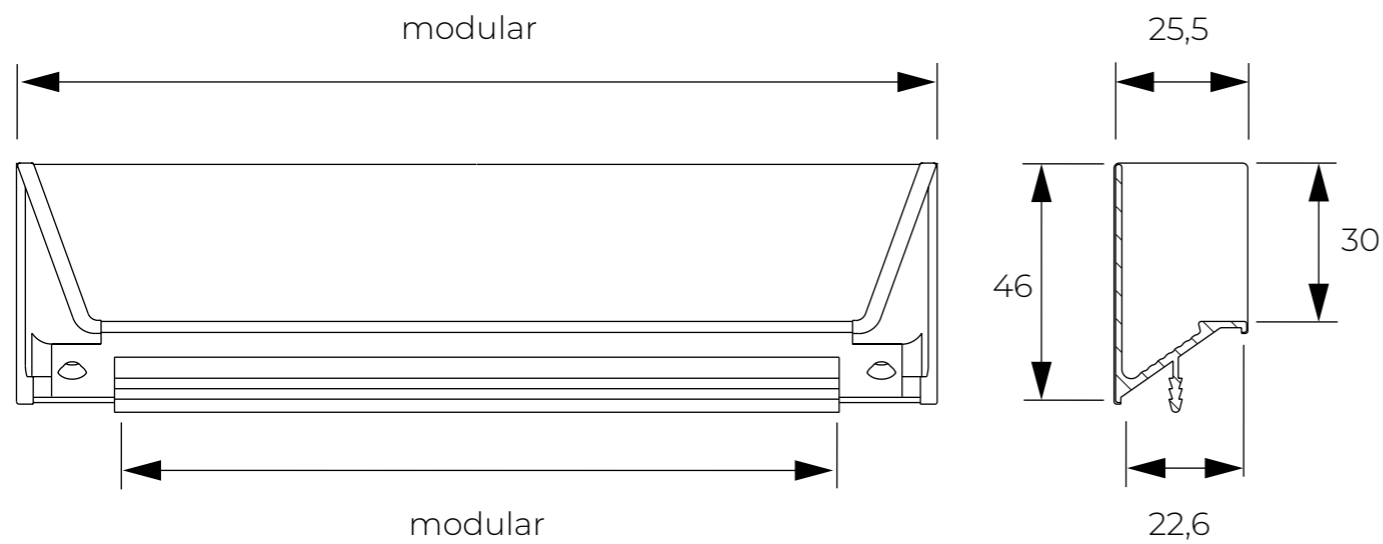




# VELA 25-073



DOOR THICKNESS **22mm** / **HARPOON** ASSEMBLY / **ALUMINUM** and **ZAMAK**



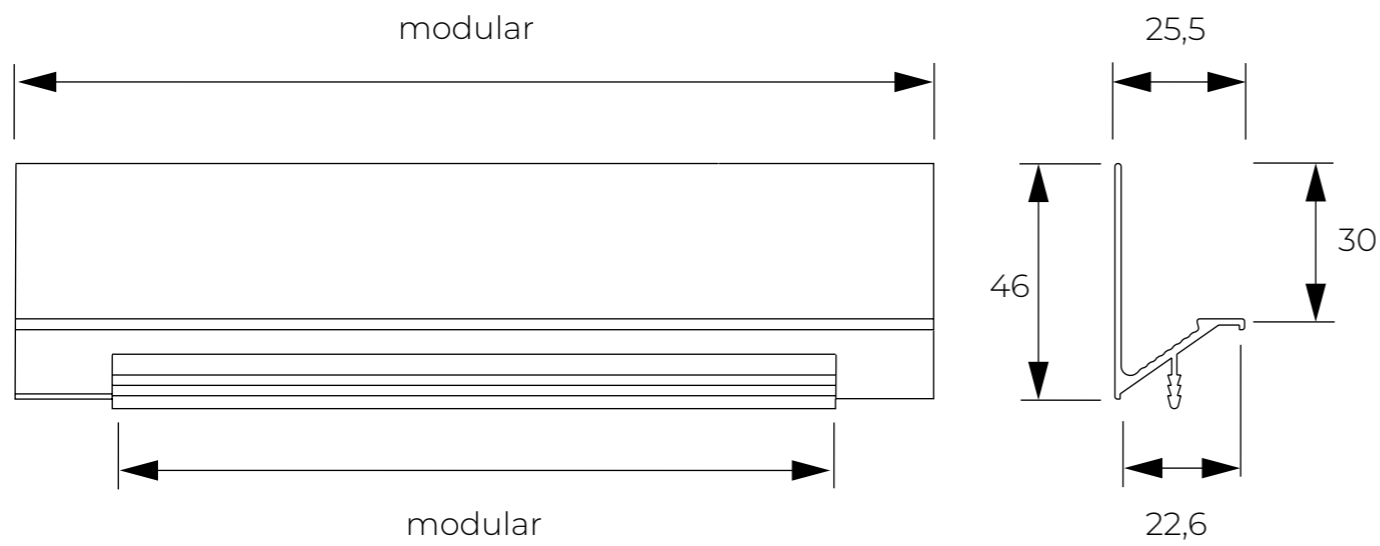
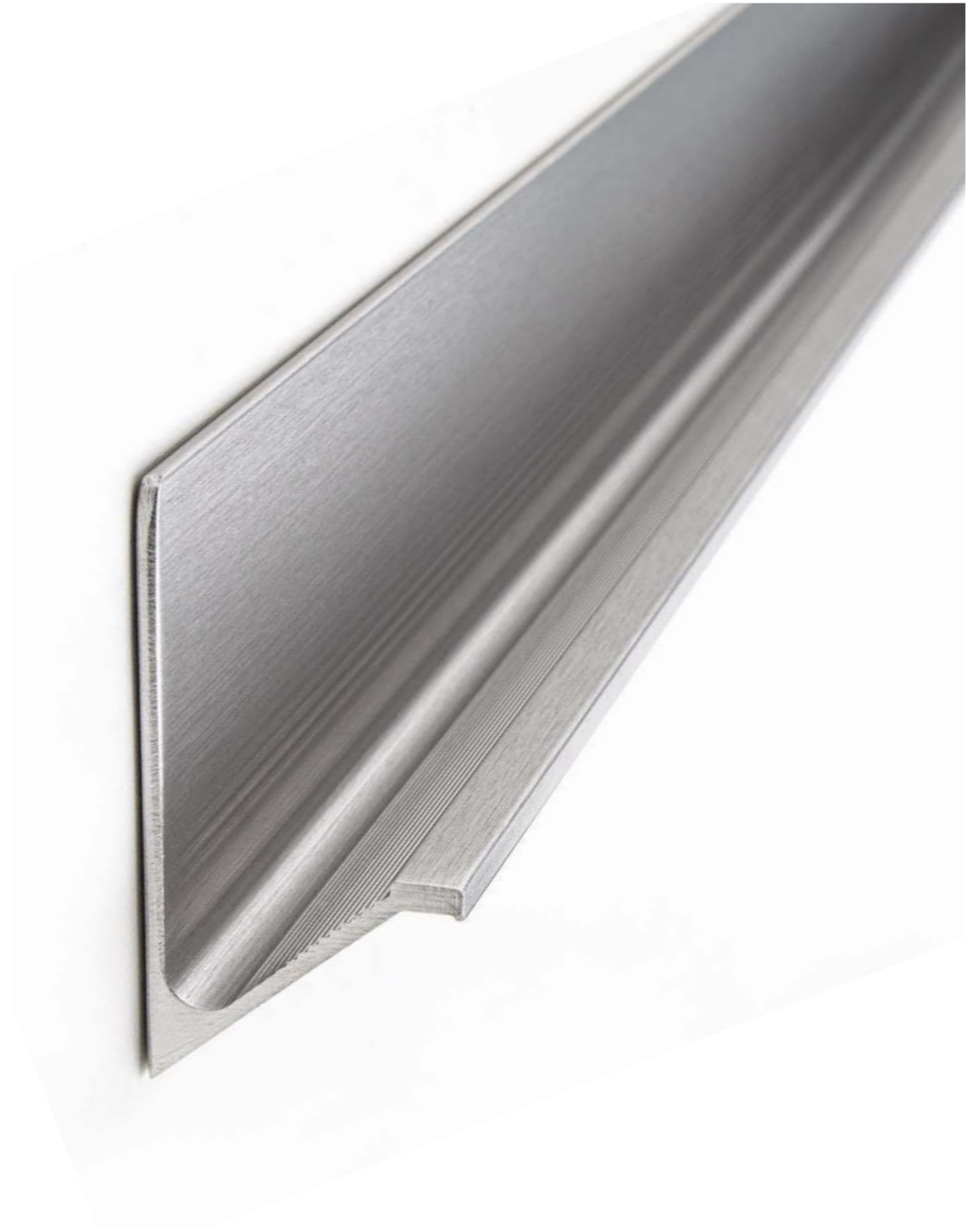
/ VERSION WITH **RIGHT OR LEFT** CAP



# VELA 000747



DOOR THICKNESS **22 mm** / **HARPOON** ASSEMBLY / **ALUMINUM**





**cosma**